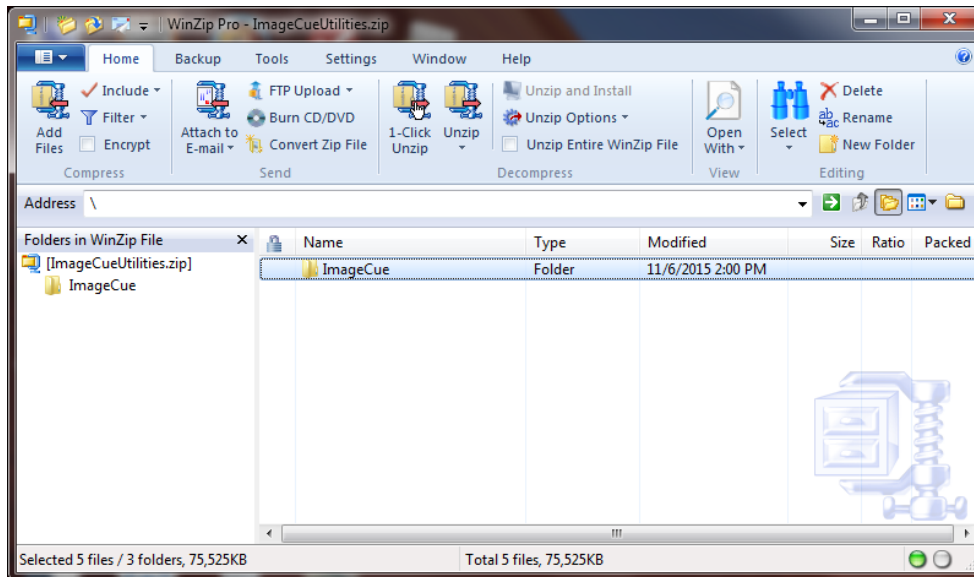
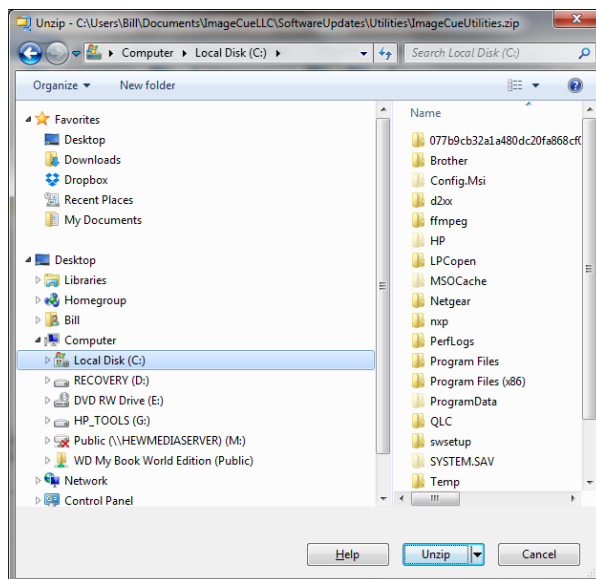


## How to Install the ImageCue Video Utilities

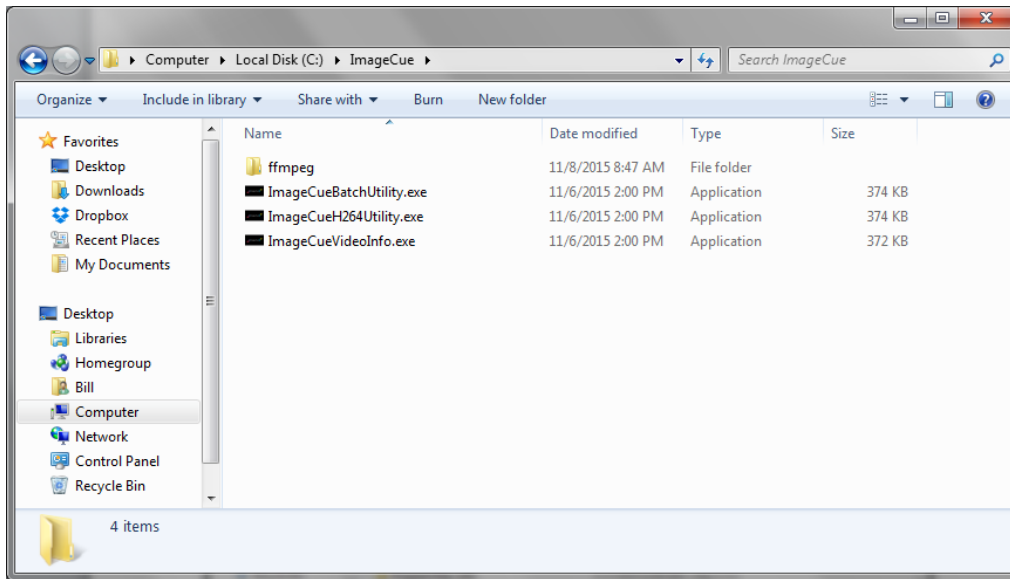
1. Download the ImageCue Video Utilities zip file from <http://imagecue.lighting>.
2. Open the zip file with an unzip application. The example shown is WinZip in Windows 7:



3. Extract the contents of the zip file to the C:/ drive. The utilities will only work if the ImageCue folder is on the C: drive at the root:



4. Open the folder at C:/ImageCue. This is the location of the utility programs:



5. You can create shortcuts to the utilities (for your desktop) by right-clicking on each ".exe" file and selecting "Create shortcut" from the dropdown menu. Then, drag and drop the shortcut to your desktop. Make sure you put the shortcut on the desktop, not the actual ".exe" file.
6. The ImageCue utility applications can be started (opened) by double-clicking on the shortcut icon. The first time you run the ImageCue utility programs you may get a warning from Windows, and possibly from your anti-virus software. Make sure to "uncheck" the box next to "Always ask before opening this file" so that you won't always get the warning.
7. You may also get a warning the first time the ImageCue program opens FFMPEG. Allow the program and make sure to uncheck the box for it too.

Details on the use of the applications may be found in the ImageCue User's Guide.