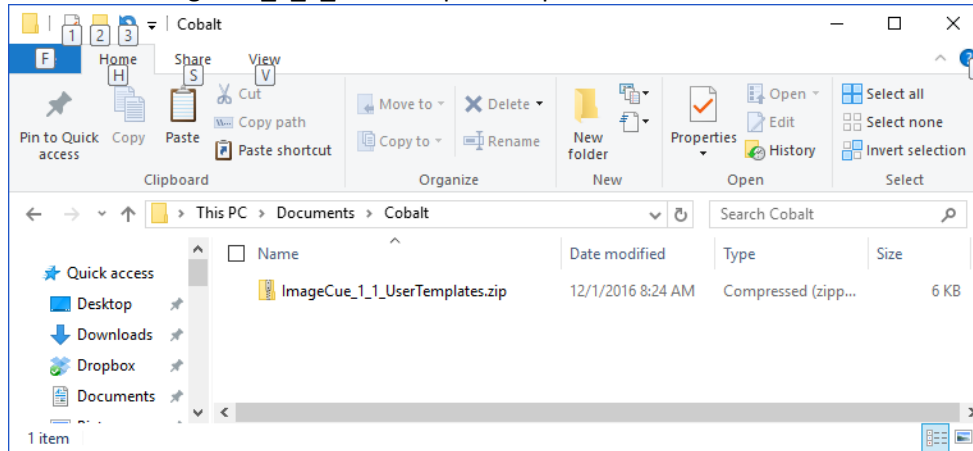
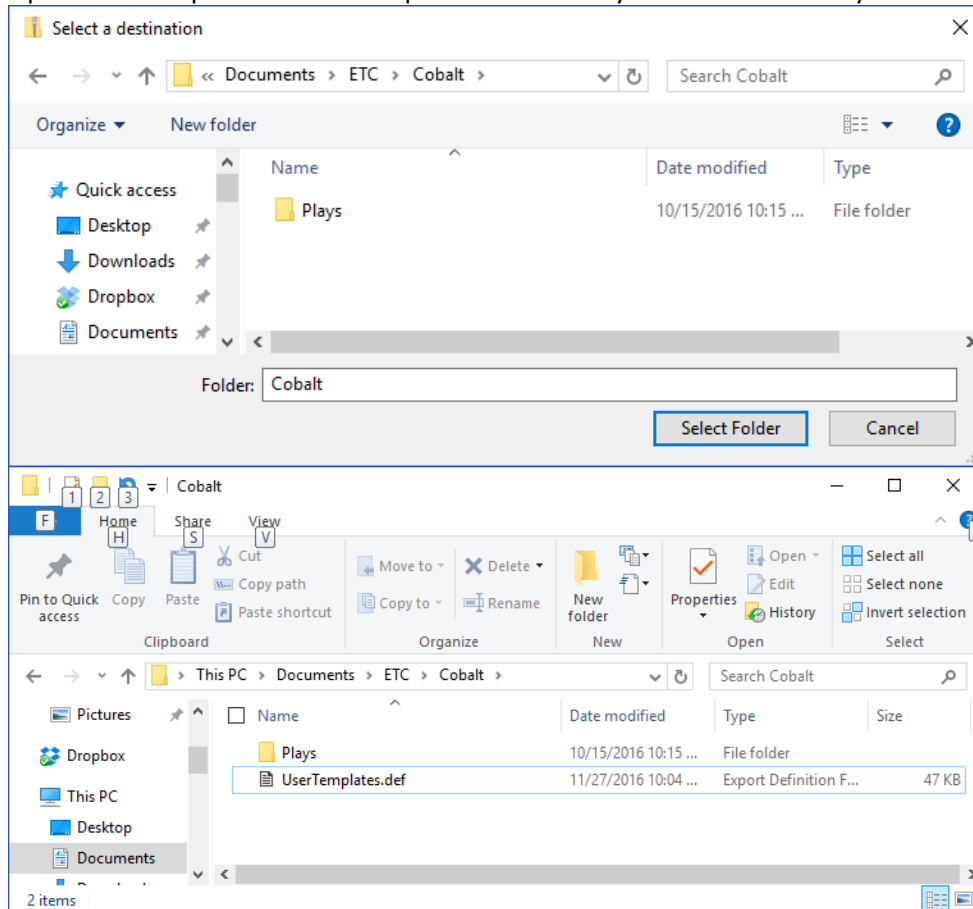


## Loading ImageCue Templates into Cobalt Consoles

- 1) Download the ImageCue\_1\_1\_UserTemplates Zip file:

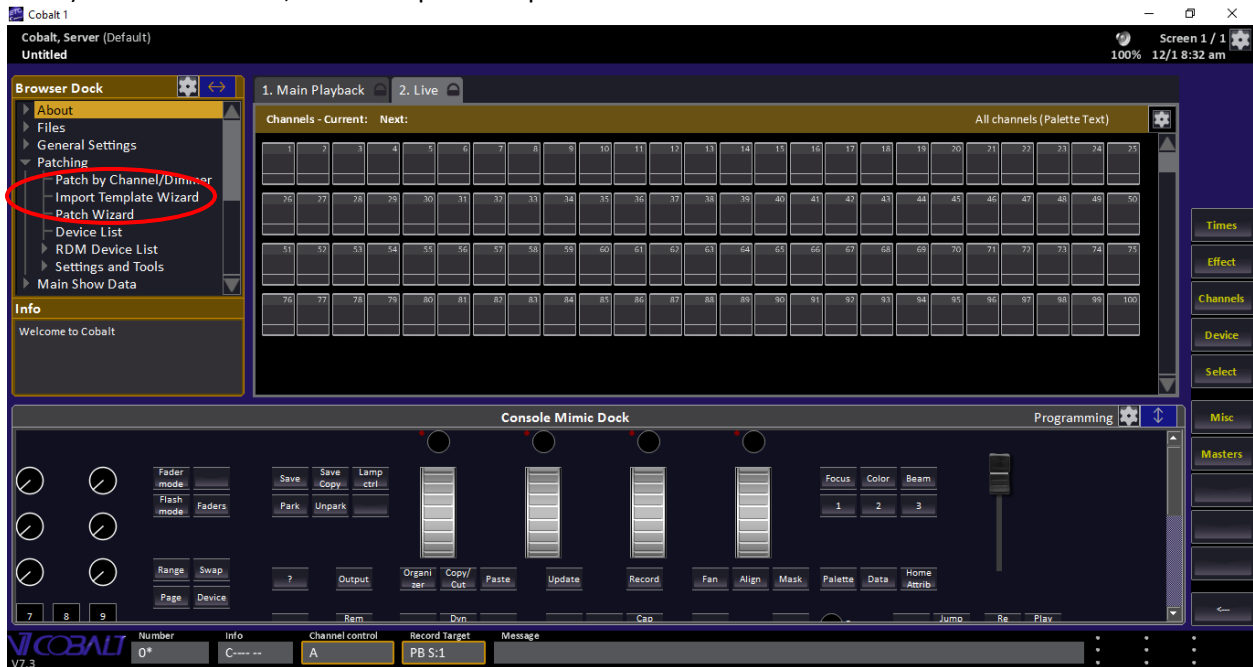


- 2) Unzip the file and put the "UserTemplates.def" file in your Cobalt directory:

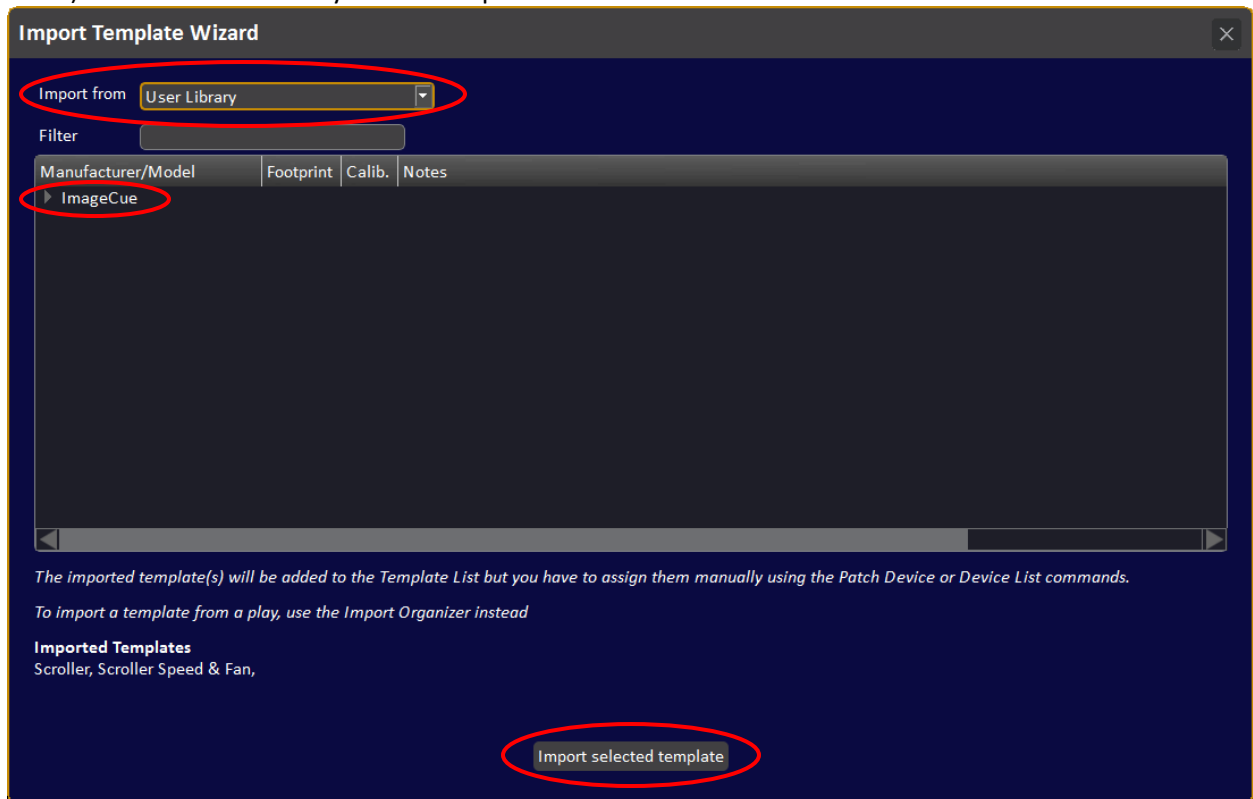


**NOTE: If you already have a file named "UserTemplates.def" in the Cobalt folder – RENAME IT! If you do not do this, you will LOSE THE CONTENTS OF YOUR ORIGINAL FILE!!!!**

3) In the Browser, select "Import Template Wizard":



4) Select "User Library" in the "Import From" box:



5) Click on "Import selected template" to import the ImageCue templates.